

**LIVE!**

*from*

**MARTIN  
COUNTY**

**IT'S FY 2024**



Martin County Community Redevelopment Agency



SETTING THE STAGE:

# A MESSAGE *from the* CRA CHAIR

## LIVE FROM MARTIN COUNTY... IT'S FY 2024!

Welcome to our enhanced digital format! We are bringing the Martin County Community Redevelopment Agency (CRA) and the people and businesses that make up our six CRA areas – Golden Gate, Hobe Sound, Jensen Beach, Old Palm City, Port Salerno and Rio – to you LIVE! This cutting-edge document brings you up front and personal with our community as you meet our dedicated volunteer board and committee members, our local businesses, residents and county staff. We are so proud of our accomplishments in FY 2024 that we want you to feel the excitement.

*With just a few clicks or taps of your device, you will **SEE** the projects, **HEAR** the enthusiasm and **EXPERIENCE** the success of Fiscal Year 2024 in our six Martin County Community Redevelopment areas.*

The CRA builds comprehensive projects. It's never just a roadway or a sidewalk, but all those things that complement and enhance the experience. Landscaping so people can walk comfortably on that sidewalk; crosswalks, signage and lighting to safely cross that freshly paved roadway; sewer installation to assist vacant parcels redevelop; water quality, drainage and stormwater enhancements to protect our river and our homes; picnic tables and benches to enjoy the outdoors, rest, relax and visit with neighbors and friends; and public art all along the journey to feed the soul!

These "Quality of Life" projects led the way in FY 2024. They are multifaceted and check numerous redevelopment boxes. They help the environment, make pedestrians safer, protect our properties, increase value and elevate health and welfare. The Patio at Palm City Place, Ripple Stormwater Eco-Art, Rio Infill Sewer, Cove Road Sidewalks, Manatee Pocket Boardwalk Enhancement, Rio Bioswale and SE Woillard Avenue. All completed in FY 2024 and coming to you LIVE!

DR. REX SENTELL



# MISSION

The Martin County Community Redevelopment Agency (CRA) is revitalizing and restoring the neighborhoods and town centers of the Martin County CRA areas. We are dedicated to maintaining the unique character of our communities by encouraging sustainable economic investments, promoting walkability and livability, and working collaboratively with the Neighborhood Advisory Committees and the Martin County Board of County Commissioners to advance the future health and success of our communities.



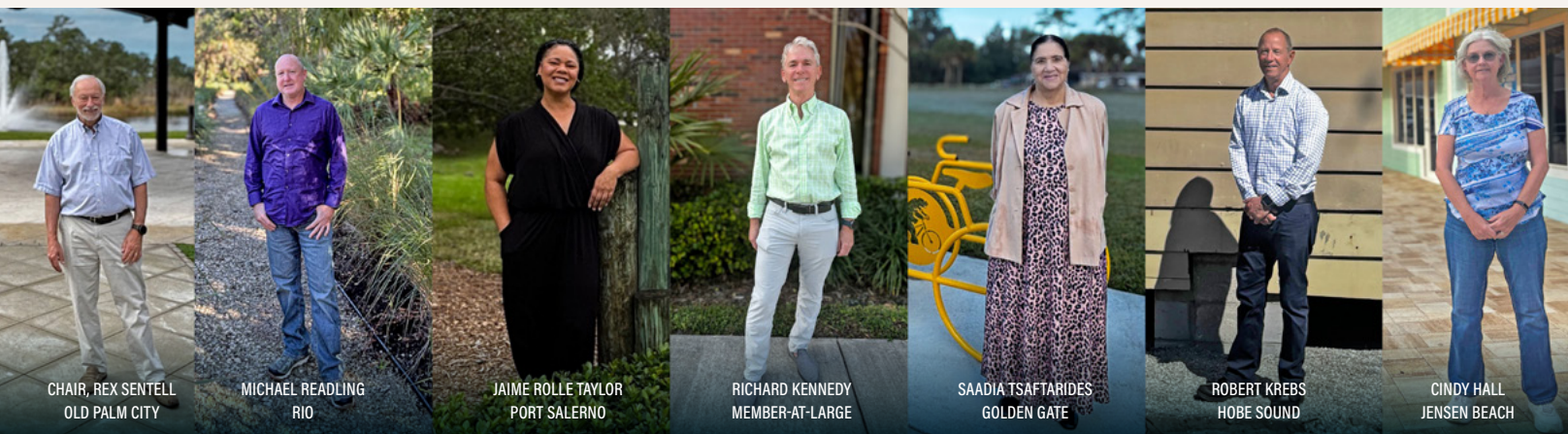
# VISION

We envision economically and environmentally sound CRA areas with safe, healthy neighborhoods and vibrant town centers; a network of well-planned, interconnected parks, public open spaces and complete streets; a full spectrum of high-quality housing that accommodates all walks of life; well-designed community infrastructure; and successful redevelopment that celebrates the distinctive identity and community character of each area and contributes to the overall sustainability of Martin County.








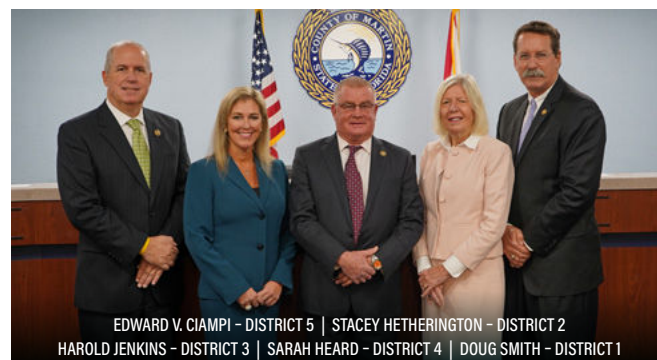
# MEET the CAST of Martin County



A Community Redevelopment Agency (CRA) is a public entity that finances redevelopment within focused, geographic areas to reverse deterioration, revitalize the business climate, increase property values and encourage active participation and investment by citizens and the private sector. Under Florida law (Chapter 163, Part III), local governments can designate a CRA when certain conditions exist.

-  Adopt a Finding of Necessity to formally identify adverse conditions
-  Adopt a Community Redevelopment Plan to address the unique needs/goals of the target area
-  Establish a Redevelopment Trust Fund to enable staff to implement the redevelopment plan

## 2024 MARTIN COUNTY BOARD OF COUNTY COMMISSIONERS



*Martin County's **five elected commissioners** are responsible for providing general government services, overseeing the development of infrastructure and determining the regulations regarding zoning and land use.*

## COMMUNITY

Develop Community Redevelopment Plan

## NAC

Advise and make recommendations to staff and the CRA Board

## CRA

Evaluate NAC input, develop countywide program

## BOCC

Approve projects and funding

The Board of County Commissioners is also responsible for appointing eligible, knowledgeable and engaged community members to serve as volunteers on the Community Redevelopment Agency (CRA) Board and on the Neighborhood Advisory Committees (NAC), each of which represents one of the six CRA areas in Martin County – Golden Gate, Hobe Sound, Jensen Beach, Old Palm City, Port Salerno and Rio.

## IT WORKS LIKE THIS:

A **professional staff** utilizes the Community Redevelopment Plan written by the community that directs the projects and activities to be undertaken by the CRA in each area. Plans for the implementation of those projects and activities are brought to the following committees and boards for input, recommendation and approval.

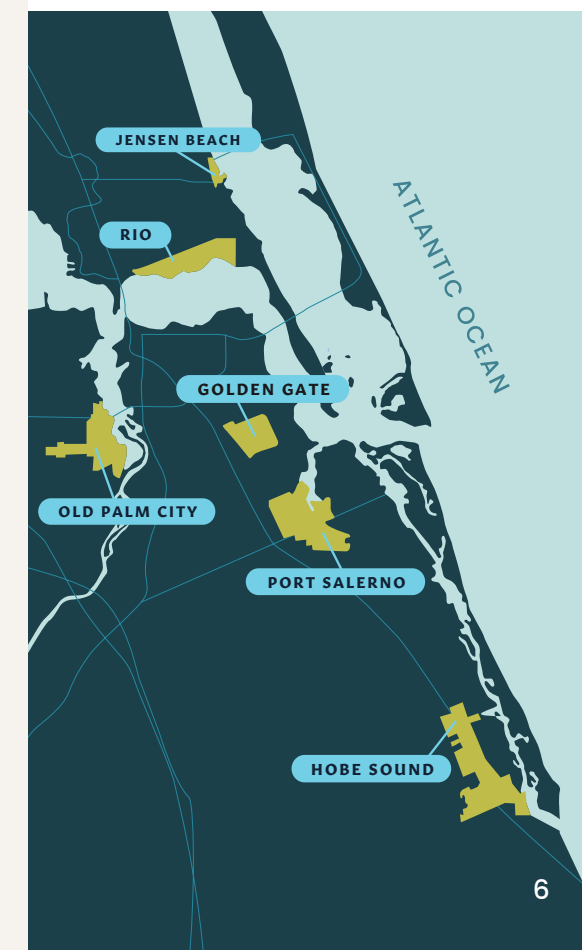


A **Neighborhood Advisory Committee** guides each community redevelopment area. Comprised of five-nine involved, local individuals, the committee provides advice and recommendations on identified projects, goals and objectives.

The seven-member **Community Redevelopment Agency Board** reviews the recommendations of the NACs, adopts redevelopment plans and budgets, provides direction to staff and makes recommendations to the Board of County Commissioners.

The **Martin County Board of County Commissioners** is the governing body that directs the activities of the agency. They approve projects, allocate project funds and appoint the CRA and NAC members.

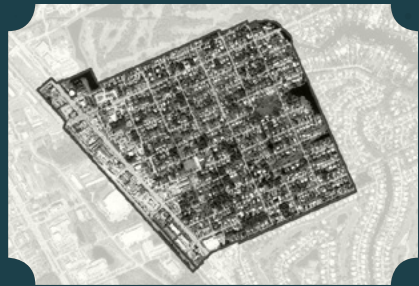
**MARTIN COUNTY IS ONE OF 67 COUNTIES IN FLORIDA AND WAS ESTABLISHED BY THE FLORIDA LEGISLATURE IN 1925.**





# GOLDEN GATE

*The Golden Gate CRA is a pedestrian and bicycle-friendly enclave that celebrates its rich history and multicultural vibrancy.*



**TOTAL ACREAGE** 379  
**ESTABLISHED-SUNSET** 2002-2042

## Neighborhood Advisory Committee



**SAADIA TSAFTARIDES**  
JOHN GONZALEZ  
BRAD TANZER  
JEFF GREGORY  
REBECCA HARTMAN



**SCAN/CLICK TO  
HEAR FROM THIS  
CRA BOARD MEMBER**



# HOBE SOUND

*The Hobe Sound CRA offers an intimate main street and connected neighborhoods with that small town community feel against a backdrop of sweeping banyan trees and beautiful beaches.*



**TOTAL ACREAGE** 1,024  
**ESTABLISHED-SUNSET** 2000-2040

## Neighborhood Advisory Committee



**ROBERT KREBS**  
ALLYSON VON HOLTEN  
EMILY THORSEN  
CHRISTIAN NELSON  
ROBIN SEXNER-COLE  
SUZANNE CROMWELL  
MITCHELL MILLER



**SCAN/CLICK TO  
HEAR FROM THIS  
CRA BOARD MEMBER**





# JENSEN BEACH

*Bustling downtown Jensen creates a casual, yet dynamic, atmosphere complemented by authentic architecture, a lively arts community and beautiful waterfront vistas.*



**TOTAL ACREAGE** 67  
**ESTABLISHED-SUNSET** 2002-2042

## Neighborhood Advisory Committee



**CINDY HALL**  
RON ROSE  
ANN KAGDIS  
JERRY COMPTON  
ROB WIRE



**SCAN/CLICK TO  
HEAR FROM THIS  
CRA BOARD MEMBER**



# OLD PALM CITY

*The Old Palm City CRA is reminiscent of an old Florida landscape with greenways that seamlessly connect a modern town center with family-owned farmland, well-worn horse trails, friendly neighborhoods and thriving businesses.*



**TOTAL ACREAGE** 609  
**ESTABLISHED-SUNSET** 2003-2043

## Neighborhood Advisory Committee



**REX SENTELL**  
DOUGLAS LEGLER  
JANE LANDRUM  
MIKE SEARLE  
CHUCK SMITH  
OSCAR TORRES  
COLLEEN PACHOWICZ  
CHRIS PINKSTON  
ROBERT CORBETT



**SCAN/CLICK TO  
HEAR FROM THIS  
CRA BOARD MEMBER**





# PORT SALERNO

*The Port Salerno CRA is a unique historic fishing village that connects community identity with smart economic and socially conscious investments focusing on neighborhoods and local businesses.*



**TOTAL ACREAGE** 860  
**ESTABLISHED-SUNSET** 2000-2040

## Neighborhood Advisory Committee



**JAIME ROLLE TAYLOR**  
CHANDLER JOSIE  
EDWARD OLSEN  
CATHY HARVEY  
ELLEN ASSELIN  
CHRISTINA ARDIGO  
JIM PECK  
KAREN WORDEN  
WENDY CLAYTON  
MARY BETH KONZ



**SCAN/CLICK TO  
HEAR FROM THIS  
CRA BOARD MEMBER**



# RIO

*A unique coastal setting full of art elements that reveal the local history complemented by an emerging, contemporary, mixed-use village center.*



**TOTAL ACREAGE** 542  
**ESTABLISHED-SUNSET** 2001-2041

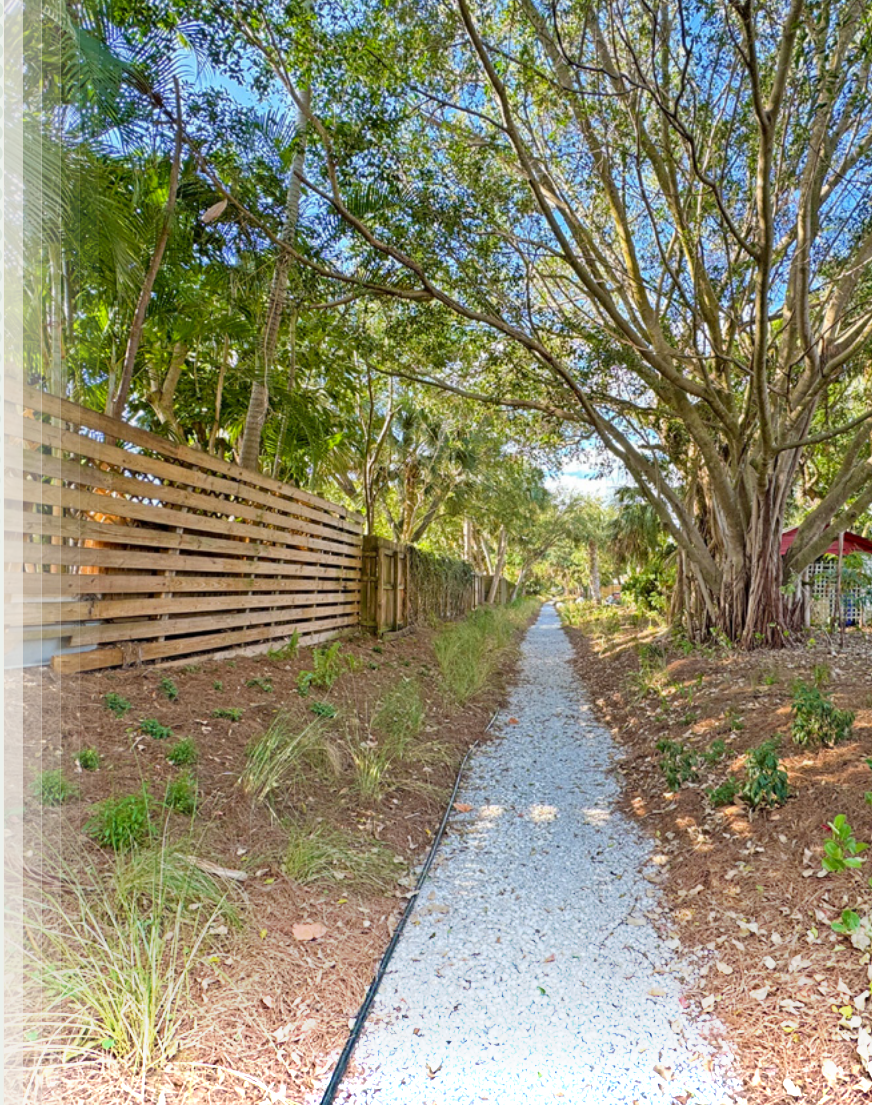
## Neighborhood Advisory Committee



**MICHAEL READLING**  
ADAM GUZI  
DEBRA HARSH  
RICHARD KENNEDY  
RACHEL HEID  
JAMIE NEWHART  
JESSICA ROSS  
SUSAN JONES



**SCAN/CLICK TO  
HEAR FROM THIS  
CRA BOARD MEMBER**





# CURRENT PROJECTS

# LIVE!

BE SURE TO  
SCAN OR CLICK  
TO SEE, HEAR  
AND EXPERIENCE  
OUR PROJECTS!



GOLDEN GATE  
EL CAMINO

BUDGET: \$3,579,323

This multimodal trail will bisect the Golden Gate community from north to south, constructed along an unopened county road. Expect to see picnic facilities, a community garden, exercise stations, a new soccer field and dirt mounds for the community's enjoyment, health and well-being.



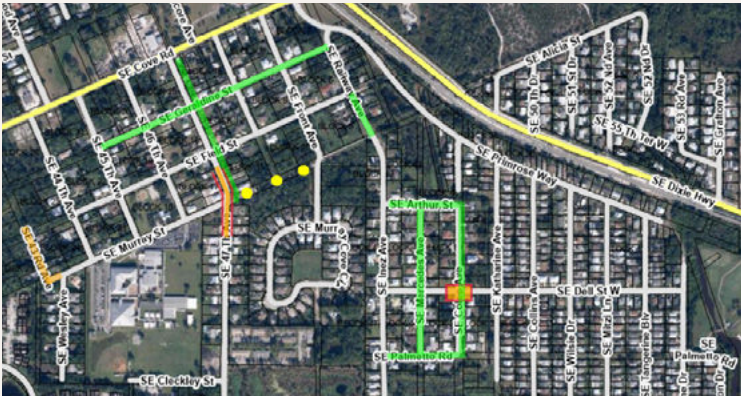
SCAN/CLICK TO ATTEND THE  
GROUND BREAKING CEREMONY!



HOBE SOUND  
DIXIE HIGHWAY STORMWATER  
AND STREETScape  
HISTORIC TRAIN STATION

BUDGET: NOT YET DETERMINED

The Martin County CRA vision for Hobe Sound includes the renewal of the A1A streetscape from SE Bridge Road to SE Saturn Street. This includes Old Post Office Alley and seven connecting side streets. Project elements include improved drainage and stormwater, undergrounding utilities, redefined pedestrian spaces, parking, lighting, a festival street and the relocation and renovation of the historic Hobe Sound train station as a principal element in this placemaking redevelopment effort.



PORT SALERNO  
NEW MONROVIA  
NEIGHBORHOOD  
IMPROVEMENTS

BUDGET: \$900,500

Sidewalks, lighting, road repaving and traffic calming will enhance this neighborhood south of Cove Road and west of Dixie Highway.



PORT SALERNO  
PARK DRIVE  
IMPROVEMENTS

BUDGET: \$525,450

This small but pivotal roadway is being enhanced and improved to serve residents, businesses and visitors. This will take the form of sewer accessibility, drainage enhancements, roadway repaving, a new dumpster enclosure, a crosswalk and new park equipment.



SCAN/CLICK TO HEAR FROM  
A PETTWAY VILLAGE RESIDENT!



HOBE SOUND  
PETTWAY VILLAGE  
AFFORDABLE HOUSING

FY 2024 COST: \$30,000

The success of Pettway Village, a partnership of the CRA and Habitat for Humanity of Martin County, continues! This new neighborhood, built by the CRA, has completed and dedicated 10 of its planned 18 new homes.



# CURRENT PROJECTS

# LIVE!

BE SURE TO  
SCAN OR CLICK  
TO SEE, HEAR  
AND EXPERIENCE  
OUR PROJECTS!



## JENSEN BEACH CHURCH STREET

BUDGET: UNDERGOING POTENTIAL  
RE-DESIGN FOR COMPLETE STREETS

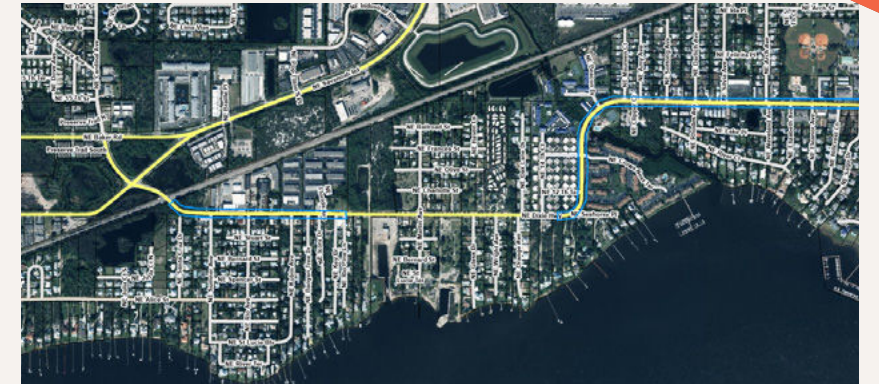
Increased parking continues to be a priority for the community. This project focuses on constructing additional on street parking to serve businesses and residents along with other elements such as undergrounding utilities, and adding sidewalks, lighting and landscaping resulting in a complete street that will increase pedestrian and vehicular safety, sustainability, walkability and community connection.



## RIO CR 707 STREETScape ENHANCEMENTS

CONCEPTUAL DESIGN  
BUDGET: \$255,248

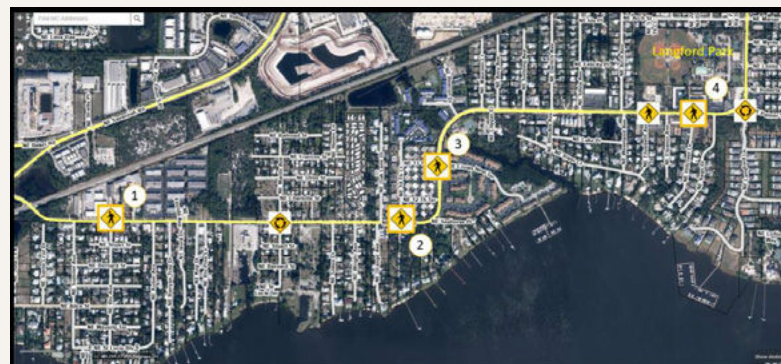
The Rio Community Redevelopment Plan calls for an attractive, pedestrian friendly CR 707. This project will complete that vision on Dixie Highway from the “S” curve to Langford Lane and from Rio Pine Lane to the railroad tracks with the installation of street trees, sidewalks, bike lanes, curbs and medians.



## OLD PALM CITY SW CORNELL AVENUE IMPROVEMENTS

CONCEPTUAL AND ENGINEERING  
DESIGN BUDGET: \$414,000

One of the components that make up the Old Palm City Community Redevelopment Plan is enhanced neighborhood streets, sidewalks and bikeways. SW Cornell Avenue is an important road in this neighborhood. It runs parallel to Mapp Road and is the only other street that connects Martin Highway and Martin Downs Boulevard. The project will widen sidewalks to accommodate safe passage for pedestrians and bicyclists, add street trees for traffic calming and beautification and look at the potential of including three dead-end street, waterfront passive pocket parks.



## RIO CROSSWALK CONNECTIONS

BUDGET: \$165,000

Dixie Highway spans the Rio CRA from east to west with residences and businesses on each side. Four new, much needed crosswalk connections are planned at strategic locations so that pedestrians and bicyclists can traverse safely.



## PORT SALERNO NEW MONROVIA PARK IMPROVEMENTS

BUDGET: \$550,000

This beloved and well-used neighborhood park will receive a new basketball court, more accessible pathways, additional benches, land regrading and a playground shade structure.

## RIO TOWN CENTER REDEVELOPMENT

CONCEPTUAL DESIGN BUDGET: \$142,310

The CRA has acquired key properties on the CR-707 corridor. These properties, along with county owned land, will enable the continued redevelopment of the Town Center. A focal point of this project will be the reconstruction of the Rio Civic Center building, a space that is important to the community and will complete Rio's Town Center vision.





# COMPLETED PROJECTS **LIVE!**

BE SURE TO SCAN OR  
CLICK TO SEE, HEAR AND  
EXPERIENCE OUR PROJECTS!

## OLD PALM CITY THE PATIO AT PALM CITY PLACE

COST: \$1,853,497

This Town Center green space marks a significant milestone in the ongoing efforts to revitalize and enrich the Palm City community. Designed as a multifunctional outdoor space, this is where the community can gather to unwind and connect. The Patio hosts community events and features concrete ping pong tables, cornhole sets, picnic tables, scenic walking paths, a pavilion, a fountain and a fishing pier.



SCAN/CLICK TO BE A PART  
OF THE RIBBON CUTTING!



## PORT SALERNO PELICANS ON PARADE

COST: \$19,000

These three stunning, six-foot tall, stainless steel pelican sculptures are perched on two-foot pilings and weigh 200 pounds each! The Port Salerno CRA partnered with the Martin County Art in Public Places program to bring this incredible project to life. Located on the Manatee Pocket Bridge, these magnificent sculptures celebrate the pelicans commonly found in Port Salerno and the complementary signage shares fun facts about these fascinating birds and the area, blending artistry with history and education.



SCAN/CLICK TO SEE ALL  
THREE SCULPTURES ONSITE!



## OLD PALM CITY RIPPLE STORMWATER ECO-ART PROJECT

COST: \$2,217,381

A unique combination of stormwater treatment, water quality, art, creative placemaking, education and community engagement, Ripple reconnects the Old Palm City neighborhood with the St. Lucie Estuary at four interconnected stormwater treatment areas. This artist-led project brought together residents, businesses, county staff, engineers and architects to create a one-of-a-kind environmental amenity. The Ripple project will continue to make a big impact, turning the area into a beautiful and inviting space while helping the environment.



SCAN/CLICK AND TAKE A DRONE  
TOUR OF ALL FOUR PARCELS!



SCAN/CLICK TO WALK THE BIOSWALE AND  
LEARN ITS ENVIRONMENTAL IMPACT!



## RIO THE BIOSWALE

COST: \$328,000

This innovative project was designed to tackle two major challenges: alleviate neighborhood flooding and reduce urban stormwater runoff. The project also created a shaded walking path with fully native landscaping for residents to enjoy.



# COMPLETED PROJECTS LIVE!

BE SURE TO  
SCAN OR CLICK  
TO SEE, HEAR  
AND EXPERIENCE  
OUR PROJECTS!



## RIO INFILL SEWER

COST: \$538,157

Sewer access throughout the Rio CRA is complete! In partnership with the Utilities and Solid Waste Department, the Rio Infill Sewer Project made sewer service available to over 800 properties, increasing property values and protecting our local waterways.



## HOBE SOUND SE WOILLARD AVE. STORMWATER & LANDSCAPE

COST: \$10,586

A 12,000 square foot vacant, county owned property in a residential area has been reimagined into a community amenity. In partnership with our Field Operations Division and county horticulturalist, stormwater capacity was enlarged and a landscape buffer for the neighborhood was created, increasing wildlife usage and providing a carbon sink.



## PORT SALERNO COVE ROAD SIDEWALKS

COST: \$97,990

Eight hundred feet of new sidewalk, including two crosswalks and 14 buttonwood trees, have been installed on the north side of Cove Road between SE Ebbtide Avenue and SE Grouper Avenue. Children who reside in the north neighborhood now safely walk to Murray Middle School, located south of Cove Road. Thank you to the property owners along that stretch who dedicated some of their property to the county, increasing pedestrian safety and neighborhood connection.



## PORT SALERNO MANATEE POCKET BOARDWALK

COST: \$141,530

The Boardwalk has been enhanced for safety and the continued positive use by commercial fishing enterprises, residents and visitors.



## GOLDEN GATE SE BIRCH AND DURANT AVENUES

COST: \$224,388

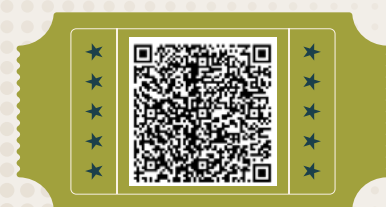
These two roadways were unpaved, gravel, dirt and unstable. After the county installed vacuum sewer facilities in this CRA area, all the roads have been resurfaced and these two streets have been reconstructed and resurfaced. This has increased connectivity, removed blight, assisted residents and businesses and elevated the appearance of the whole community.



# Spotlight on our COMMUNITY



## MARTIN CARES



SCAN/CLICK TO HEAR  
FROM A CARES PARTICIPANT

## CITIZENS ACADEMY AND RESOURCE EDUCATION SERIES

CARES is an award-winning program that offers a behind the scenes look at Martin County government. Over a six-week period, participants enjoy a variety of field trips to various Martin County facilities, and personally get to know the men and women who oversee the day-to-day operation of the departments that provide key services and have a firsthand knowledge of the structure and function of county government.

## COMMUNITY PULSE

### MARTIN COUNTY CRA INITIATED A NEW COMMUNICATION PROGRAM

It's our "three touch" strategy to enhance communication, community knowledge and meeting attendance. It works like this:

#### 1ST TOUCH

Meeting Announcement: We publicly notice and send out an agenda one week prior to each meeting.

#### 2ND TOUCH

Meeting Reminder: A reminder with the agenda is sent two to three days prior to the meeting.

#### 3RD TOUCH

Meeting Recap: The CRA Community Pulse e-blast is sent after the meeting, highlighting key updates and outcomes from the meeting.



The CRA works successfully with the Martin County Sheriff's Office's Community Policing Unit as both agencies place emphasis on heavy community involvement. This unit is the direct link between the community and the Sheriff's Office and requires law enforcement and citizens to join as partners in both identifying and effectively addressing issues.

**NEIGHBORHOOD  
ADVISORY COMMITTEE  
MEETINGS:**

**36** PER YEAR

**CRA BOARD MEETINGS:**

**12** PER YEAR

**AVERAGE EMAIL  
OPEN RATE:**

**49.6%**

### WE HAVE RECEIVED MANY POSITIVE COMMENTS FROM THE COMMUNITY...

*I really like this email on the key updates!  
Your newsletter is most informative.  
Thanks for doing this. Good info!  
Thank you... great newsletter!*

”



#### 9/11 BRIDGE WALK

This event brought together hundreds of Martin County residents to remember and honor those that died on September 11, 2001.



#### UNITED WAY HOLIDAY PROJECT

Through the United Way Holiday Project, local children received new bikes, bringing joy and wheels to their holiday season.



#### HIBISCUS HOUSE ANGEL PROJECT

As part of the Hibiscus House Angel Project, CRA staff adopted 12-year-old James and helped make his Christmas wish list come true!



#### RIPPLE STORM- WATER ECO-ART

Public Works and CRA staff hosted a special Ripple Stormwater Eco-Art project tour for the IFAS Water Ambassadors.



#### FLORIDA REDEVELOPMENT ASSOCIATION CONFERENCE

2024 Florida Redevelopment Association Conference in Tampa.



# and the AWARD GOES TO...

## THE GARDEN OF EXCELLENCE AWARD

from the Florida Native Plant Society for  
the Ripple Stormwater Eco-Art Project  
(with Public Works Field Operations Division)

## A SPECIAL PROJECT RECOGNITION AWARD

from MartinArts for the Ripple  
Stormwater Eco-Art Project

*These awards show  
how Ripple brings  
art, nature and  
community together  
in amazing ways!*

## THE 2024 FACILITY SHOWCASE

by the Florida Recreation and Park  
Association for The Patio at Palm City Place

This project was featured in the winter edition of  
the FRPA Journal and underscores the Patio's role  
as a standout space for our community!

## UNIVERSITY OF FLORIDA FRIENDLY LANDSCAPE GOLD CERTIFICATION

for the Golden Gate Median Compost/Water  
Conservation Project

(with Public Works Field Operations Division)

## UNIVERSITY OF FLORIDA FRIENDLY LANDSCAPE GOLD CERTIFICATION

for the Rio Bioswale

(with Public Works Field Operations Division)





# CRA BUSINESSES LIVE!

Throughout 2024, we partnered with local commercial property owners to help redevelop six properties across our CRAs. By supporting improvements like façade upgrades, landscaping and structural enhancements, the CRA Investment Program is transforming properties into vibrant assets that benefit the entire community.

TOTAL PROJECT COSTS

**\$139,483**

TOTAL CRA INVESTMENT

**\$94,786**

TOTAL COMMUNITY INVESTMENT

**\$44,697**



SCAN/CLICK TO HEAR FROM THIS BUSINESS OWNER

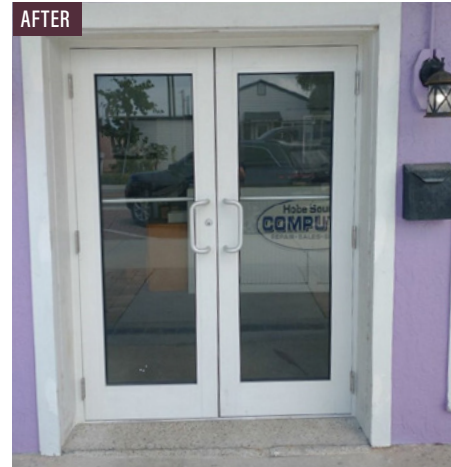
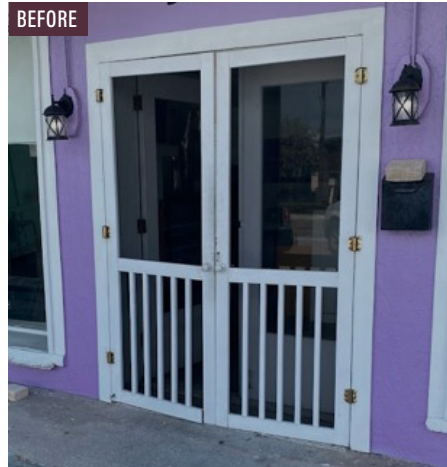
9014-9054 SE BRIDGE ROAD

## HOBE SOUND

### Project Elements:

- IMPACT RATED GARAGE DOORS
- HURRICANE RESISTANT ENTRANCE DOORS
- 6 FLOWERPOTS FOR THE SIDEWALK

You can see by the project elements that this project successfully improved the sustainability of the built environment and protected small business investment. The six flowerpots increased pedestrian safety by hindering vehicles from driving on the sidewalk to get a parking space!



1930 NE JENSEN BEACH BOULEVARD

## JENSEN BEACH

### Project Elements:

- CLEANING
- PAINTING

The investment in this historic building continues to make Jensen Beach Boulevard feel fresh and relevant. This lovely old home, on a very visible corner, serves as a dental office and residence, and is a reminder of the importance of preserving our past for the future!



9138 SE BRIDGE ROAD

## HOBE SOUND BEACH SHOP

### Project Elements:

- ROOF REPAIR
- PAVER REPLACEMENT
- EV CHARGER

This project enhanced the look and increased the sustainability of an entire building, assisting three small businesses. The EV charger is open for public use and is the only one for many miles.



SCAN/CLICK TO HEAR FROM THIS SMALL BUSINESS OWNER!



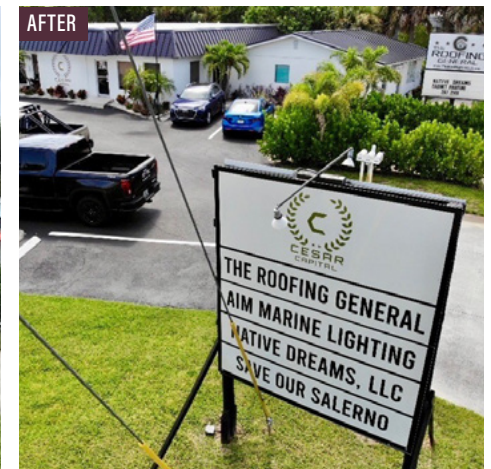
4625 SE DIXIE HIGHWAY

## PORT SALERNO

### Project Elements:

- NEW SIGNAGE
- NEW PARKING LOT ASPHALT
- NEW STRIPING

Four small businesses benefited from this investment. The updated signage and renewed asphalt and striping increased foot traffic and elevated their street presence, helping surrounding businesses as well.



3450-3498 SE DIXIE HIGHWAY

## GOLDEN GATE STUART PLAZA

### Project Elements:

- PAINT
- NEW LANDSCAPE
- NEW IRRIGATION

This strip mall consists of 18 small businesses on Dixie Highway. Two large buildings were refreshed and 400 linear feet of prime street frontage is looking great! These improvements attract customers and positively affect the entire plaza and the community. A definite win for the Golden Gate CRA!



3485 SE DIXIE HIGHWAY

## GOLDEN GATE BOB'S BARBER SHOP

### Project Elements:

- NEW SIGNAGE
- FENCING
- FAÇADE IMPROVEMENTS
- PAINT
- NEW WINDOWS

This 50 year old, three-generation small business is a landmark in Martin County and a staple in the community. It is pedestrian friendly and promotes neighborhood interaction and inclusion. Now it is more sustainable, attractive and elevates the streetscape along this busy corridor.



SCAN/CLICK TO HEAR FROM THIS SMALL BUSINESS OWNER!





Lights, Camera,  
FINANCES!

LOCAL DOLLARS INVESTED LOCALLY

\$



\$



CLICK/SCAN TO LEARN MORE ABOUT TIF

CRA TAXABLE VALUE INCREASE BASE YEAR TO 2024

CRA	Base Year	Base Taxable Value	10/31/24 Taxable Value	2024 Final County Taxable Value	% Percent Change
Golden Gate	2002	51,415,512	286,082,752	179,996,495	206.08%
Hobe Sound	2000	93,126,222	682,350,466	411,013,971	341.35%
Jensen Beach	1999	9,454,379	79,285,117	69,897,692	639.32%
Old Palm City	2002	93,653,780	476,989,979	276,778,836	195.53%
Port Salerno	1999	77,238,908	558,489,130	332,916,870	331.02%
Rio	2000	91,321,557	572,615,188	343,388,054	276.02%

Link to most recent, complete CRA financial statements FY 2023:  
<https://bit.ly/CRAFinancials>

Total Revenues:  
\$6,593,273M

of Tax Increment Financing  
(TIF) to the Martin County  
CRA for FY 2024 (65%)

General Fund  
Taxes:  
\$4,302,775

Fire Rescue  
Unincorporated Taxes  
\$1,752,213

Stormwater and Roads  
Unincorporated Taxes:  
\$390,343

Parks and Recreation  
Unincorporated Taxes:  
\$106,499

Martin County CRA managed  
\$3,043,500M in grant funds in FY 2024



GOLDEN GATE CRA

Assets: \$2,607,227.57  
Liabilities: \$70,550.81  
Expenditures: \$461,773.89



HOBE SOUND CRA

Assets: \$4,901,086.99  
Liabilities: \$480.00  
Expenditures: \$502,337.10



JENSEN BEACH CRA

Assets: \$1,781,121.42  
Liabilities: \$0  
Expenditures: \$113,836.65



OLD PALM CITY CRA

Assets: \$472,457.80  
Liabilities: \$0  
Expenditures: \$1,264,993.82



PORT SALERNO CRA

Assets: \$4,392,767.76  
Liabilities: \$64,915.39  
Expenditures: \$545,696.19



RIO CRA

Assets: \$3,905,515.00  
Liabilities: \$0  
Expenditures: \$696,665.28





**MARTIN COUNTY OFFICE  
OF COMMUNITY DEVELOPMENT**

**2401 SE MONTEREY ROAD  
STUART, FL 34996**

**MARTIN.FL.US/CRA**

**772-463-3253**



# CONTACT US

The Martin County Community Redevelopment Agency Fiscal Year 2024 Annual Report addresses activities from October 1, 2023 to September 30, 2024 as required by Florida Statute Section 163.356(3)(c) and Martin County Code 39.3.B.5. This document may be reproduced upon request in an alternative format by contacting the County ADA Coordinator (772) 320-3131, the County Administration Office (772) 288-5400, Florida Relay 711, or by completing our accessibility feedback form at [www.martin.fl.us/accessibility-feedback](http://www.martin.fl.us/accessibility-feedback).



